



ECOPLANTMED Pilot Site Restoration in Tunisia

Project work package WP 6 • WP coordinator: USJ

PILOT SITE CHARACTERISTICS

- **Location:** Nefza region
- **Area:** 7 ha.
- **Annual rainfall:** 922 mm
- **The mean annual temperature:** 19.2 °C
- **Soil:** clay sandstone texture; the east and the middle of the parcel are covered by marl with a high percentage of clay

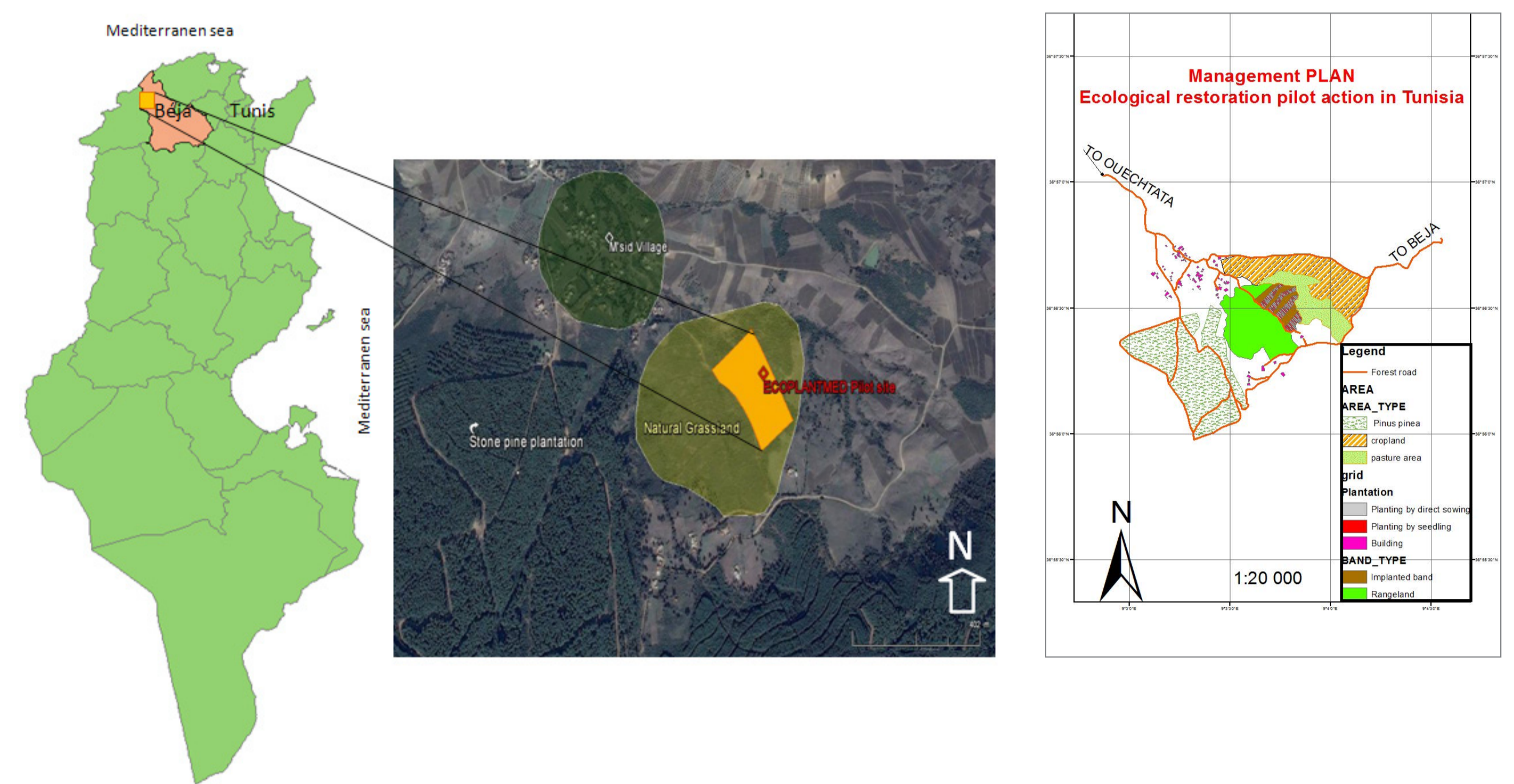
DEGRADATION FACTORS

Historical, socio-economic, silvicultural and natural factors; we can mention: the absence of appropriate silvicultural practices to promote seed production; (2) illegal seed and wood collection by inhabitants; (3) damage caused by overgrazing etc.

GOAL

The development of an integrated approach to reduce degradation and to promote land rehabilitation using native plants of local origin'

Location of ECOPLANTMED pilot site



THE RESTORATION ACTION

1 FENCING

To succeed the restoration, the area must be protected from grazing specially that the pilot site is located near a village where people are accustomed to pasture.

2 SOIL PREPARATION

The planting technique was based firstly on total clearing and stumping of vegetation and the preparation of holes of (40x40x40cm) in level curve (contour line).

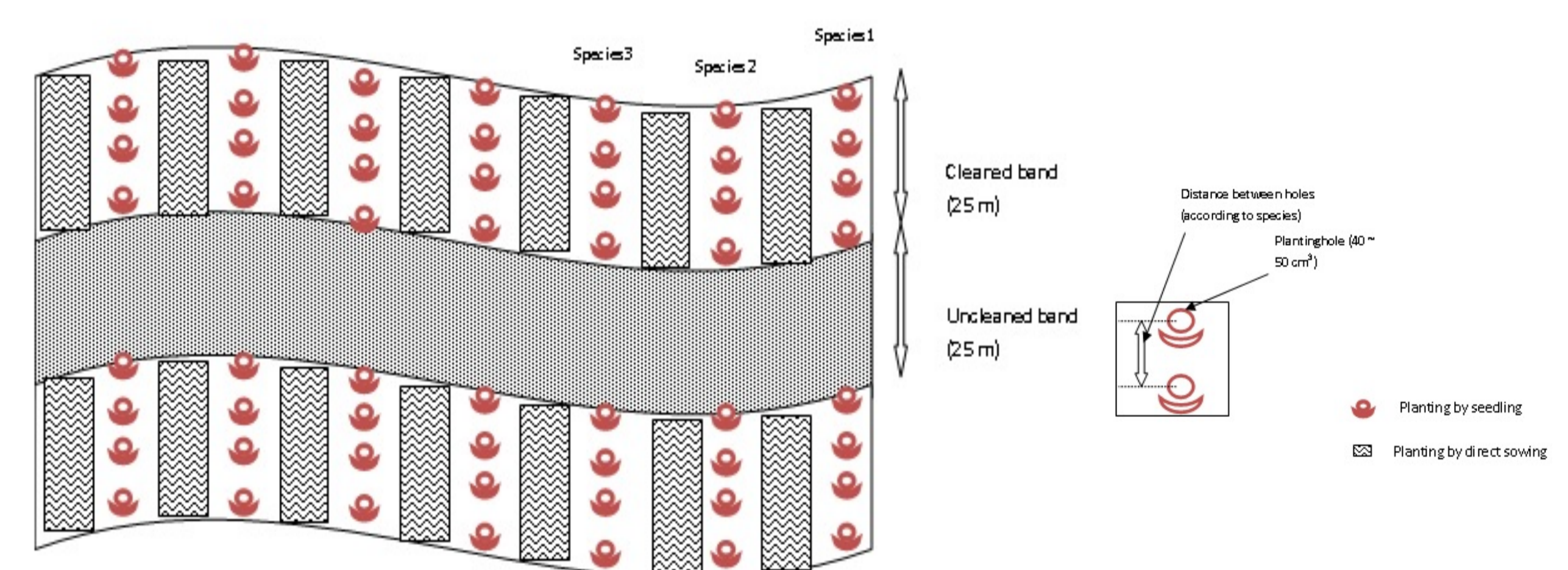


SPECIES USED IN THE RESTORATION ACTION

3 PLANTING

Seed and seedlings of native species are used and plantation will be done in bands with a bandwidth of 25 m. Two techniques will be tested, planting with seedling and direct sowing. Seedling plantation requires the creation of holes and a half-moon of land will be made down the hole to retain runoff. For planting with direct sowing, soil must be plough before sowing the seeds.

MANAGEMENT PLAN OF THE PILOT SITE



4 SITE MAINTENANCE

Monitoring will be performed once per month for at least two years after the end of the project. It will be performed by INRGREF in collaboration with the local forest services.

The project ECOPLANTMED total budget is 1.050 million Euro and it is financed, for an amount of 0.945 million Euro (90%), by the European Union through the ENPI CBC Mediterranean Sea Basin Programme 2013-2007.

The European Union is made up of 28 Member States who have decided to gradually link together their know-how, resources and destinies. Together, during a period of enlargement of 50 years, they have built a zone of stability, democracy and sustainable development whilst maintaining cultural diversity, tolerance and individual freedoms. The European Union is committed to sharing its achievements and its values with countries and peoples beyond its borders. The 2007-2013 ENPI CBC Mediterranean Sea Basin Programme is a multilateral Cross-Border Cooperation initiative funded by the European Neighbourhood and Partnership Instrument (ENPI). The Programme objective is to promote the sustainable and harmonious cooperation process at the Mediterranean Basin level by dealing with the common challenges and enhancing its endogenous potential. It finances cooperation projects as a contribution to the economic, social, environmental and cultural development of the Mediterranean region. The following 14 countries participate in the Programme: Cyprus, Egypt, France, Greece, Israel, Italy, Jordan, Lebanon, Malta, Palestine, Portugal, Spain, Syria (participation currently suspended), Tunisia. The Joint Managing Authority (JMA) is the Autonomous Region of Sardinia (Italy). Official Programme languages are Arabic, English and French (www.enpicbcmmed.eu)

Disclaimer: This poster has been produced with the financial assistance of the European Union under the ENPI CBC Mediterranean Sea Basin Programme. The contents of this poster are the sole responsibility of CIHEAM – Mediterranean Agronomic Institute of Chania and can under no circumstances be regarded as reflecting the position of the European Union or of the Programme's management structures

www.ecoplantmed.eu