

# **Ecological use of native plants for environmental restoration and sustainable development in the Mediterranean region**

**Project presentation**

**Tunis, 06 May 2015**

[www.ecoplantmed.eu](http://www.ecoplantmed.eu)

**Khorchani Ali**

**Ali\_el\_khorchani@yahoo.fr**

project context

## **ENPI CBC Mediterranean Sea Basin Programme 2007/2013 :**

A multilateral cross-border cooperation programme financed by the European Union under the **European Neighbourhood and Partnership Instrument (ENPI)**

**Project Ref. No : II-B/2.1/0671**

**Total project budget 1.050.364 € and it is financed for an amount of 945.328 € (90%) by the EU**

**Implementation period (24 months) : 01/01/2014 – 31/12/2015**

## ECOPLANTMED partnership (1/2)

**Beneficiary-coordinator:** CIHEAM - Mediterranean Agronomic Institute of Chania - Mediterranean Plant Conservation Unit (CIHEAM – MAICH), Crete, Greece

**Partner 1:** University of Cagliari, Centre for Conservation of Biodiversity (UNICA CCB), Sardinia, Italy

**Partner 2:** Saint Joseph University, Laboratory for Seed Germination and Conservation (USJ) Lebanon

**Partner 3:** Regional Ministry of Infrastructures, Territory and Environment, Centre for Forest Applied Research (CIEF) Valencia, Spain

**Partner 4:** National Research Institute for Rural Engineering, Water and Forestry, Laboratory of Management and Valorisation of Forest Resources (INRGREF) Ariana, Tunisia



Activities



6 Work packages

**WP1 : Management and coordination**

**WP2 : Communication**

**WP3 : Capitalisation of the results**

**WP4 : Conservation and Propagation of target Mediterranean plants**

**WP5 : Exchange of experience on restoration Mediterranean habitats**

**WP6 : Ecological restoration pilot actions**

## WP1 : Management and coordination

### WP1 Activities

- *Activity 1.1* Overall local management and coordination,
- *Activity 1.2* Reporting and internal monitoring,
- *Activity 1.3* Monitoring and control of the incurred expenditures.

### WP1 Output

- Coordination and management decisions,
- Overall and annual actions plans,
- Project's reports (two 6 months reports, interim and final reports),
- Financial Management, accounting and audit reports.

## WP2 : Communication

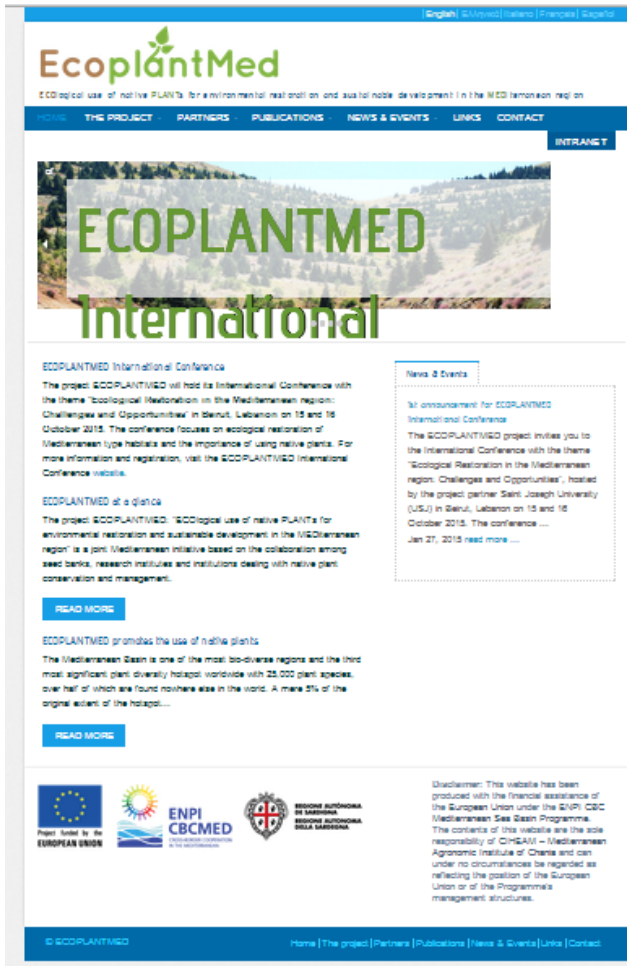
### WP1 Activities and outputs

- *Activity 2.1* Development of the **C**ommunication **P**lan, (1 CP)
- *Activity 2.2* Creation and management of a project **W**eb **S**ite, (1WS)
- *Activity 2.3* Creation of **P**roject **L**ogo and Leaflet, (1 Logo ; 5000 Leaflet)
- *Activity 2.4* Organisation of **L**ocal **W**orkshops & **D**issemination **E**vents, (10 LDE , 10 LW)
- *Activity 2.5* **P**articipation in **E**xternal **E**vents, (10 P.Ex.Ev.)
- *Activity 2.6* Translation and dissemination of the project's **G**uide of **G**ood **P**ractices on ecological restoration, (1 GGP ; 1000 copies GGP)
- *Activity 2.7* Translation and dissemination of the **P**ropagation **M**anual of target native plants species, (1 PM ; 1000 copies PM)
- *Activity 2.8* Communication for the pilot actions (2 display panel)
- *Activity 2.9* Organisation of closing **I**nternational **C**onference, (1 Int. Conf.)

## WP2 : Communication

Adresse : [www.ecoplantmed.eu](http://www.ecoplantmed.eu)

Project Logo



The screenshot shows the homepage of the EcoplantMed website. At the top, there is a navigation bar with the EcoplantMed logo and a menu with items: HOME, THE PROJECT, PARTNERS, PUBLICATIONS, NEWS & EVENTS, LINKS, CONTACT. Below the navigation bar is a large banner image of a landscape with the text "ECOPLANTMED International" overlaid. The main content area features three articles, each with a "READ MORE" button. The first article is titled "ECOPLANTMED International Conference" and discusses the project's international conference. The second article is titled "ECOPLANTMED at a glance" and provides an overview of the project. The third article is titled "ECOPLANTMED promotes the use of native plants" and discusses the importance of native plants in the Mediterranean Basin. At the bottom of the page, there is a footer with logos for the European Union, ENPI CBCMED, and the Regional Autonomous Administration of the Mediterranean Sea Basin Programme, along with a disclaimer.



## WP2 : Communication

### Project Leaflet

#### الجهات المشاركة

المركز الدولي للدراسات الزراعية المتقدمة في دول حوض البحر الأبيض المتوسط - المعهد الزراعي في مانييا  
(CIHEAM - MAICH)  
www.maich.gr

www.ecoplantmed.eu

مركز حفظ التنوع البيولوجي  
(UNICA - CCB)  
www.ccb-sardegna.it

جامعة كالياري  
www.usj.edu.lb

الوزارة الإقليمية لكثني التحتية والأرض والبيئة  
www.cma.gva.es

المعهد الوطني للبحوث في الهندسة الريفيّة والبياد والغابات  
www.ingrefagninetn

#### مشاركات

يتكون الإخاء الأوروبي من الدول 28 الأعضاء الذين قرروا جمع خبراتهم وموارهم ومضريهم، معاً وخلال فترة 50 عاماً من التوسع اربناء منطقة من الاستقرار الديمقراطي والتنمية المستدامة مع الحفاظ على التنوع الثقافي والتنميط والحريات الفردية، يلزم الإخاء الأوروبي في تناسم إنجازاته وفيجع مع الدول والشعوب خارج حدوده.

تتمه - لندم اربعاء هذه البشيرة بمساعدة مالية من الإخاء الأوروبي في إطار برنامج التعاون المشترك عبر الحدود حوض البحر الأبيض المتوسط ENPI CBC MED إن محوويات هذه الوثيقة من مسؤولية المركز الدولي للدراسات الزراعية للتنمية إسطةة البحر الأبيض المتوسط في مانييا (CIHEAM) لا تعكس ختأ أي طرف من الأطراف رأ الإخاء الأوروبي أو الهيكلت الداخلية للبرنامج.

#### مشاركات

يتكون الإخاء الأوروبي من الدول 28 الأعضاء الذين قرروا جمع خبراتهم وموارهم ومضريهم، معاً وخلال فترة 50 عاماً من التوسع اربناء منطقة من الاستقرار الديمقراطي والتنمية المستدامة مع الحفاظ على التنوع الثقافي والتنميط والحريات الفردية، يلزم الإخاء الأوروبي في تناسم إنجازاته وفيجع مع الدول والشعوب خارج حدوده.

#### ما هو الهدف من ECOPLANTMED?

يهدف ECOPLANTMED إلى المساهمة في الحد من فقدان التنوع البيولوجي وتعزيز نوج التنمية المستدامة في منطقة البحر الأبيض المتوسط من خلال تشجيع الحفاظ على النباتات المحلية وتعزيز استخدامها في إعادة تأهيل المسكن الطبيعية وقطاع الإنتاج النباتي.

#### لماذا يتم تشجيع استخدام النباتات المحلية؟

حوض البحر الأبيض المتوسط هو واحد من أكثر المناطق التنوعاً بيولوجياً وثالث أهم مركز في العالم من حيث التنوع النباتي بوجود 25,000 نوعاً من النباتات، إذ أن أكثر من نصفها غير موجود في أي مكان آخر في العالم. خمسة في المئة فقط من المساحة الأصلية لهذا المركز هي ذات أنواع سليمة أو غير مُتضررة نسبياً، وذلك بسبب الأنشطة البشرية.

يُساهم استخدام النباتات المحلية في إعادة تأهيل المسكن الطبيعية أو كبدائل للنباتات المستفدّة. كنباتات الرينة أو مفويات تعرية، وفي حماية الأراضي على المدى الطويل وتعزيز ميوئنا الطبيعي والثقافي. إضافةً إلى حماية المناظر الطبيعية وإدارتها والتخفيف لهد. ومن ناحية أخرى، يُساهم استخدام هذه النباتات أيضاً في زيادة صرورة الكُفم الأيكولوجية في ما يتعلق بتغير المناخ ومكافحة انتشار النباتات الغشامة.

#### الجهات المعنية بهذا المشروع

- السلطات العامة والوكالات الإملية التي تُعنى بإدارة البيئة وإدارة الموارد الوراثية النباتية.
- قطاعات الإنتاج النباتي العامة والخاصة.
- مهندسو ومصممو الحدائق.
- العلماء والباحثون.
- المُتخفون البيئون.
- المنظمات البيئية.
- المجتمعات المحلية. المزارعون وكافة الشعب.

#### النتائج الرئيسية المتوقعة

- حفظ أنواع النباتات المحلية خارج الموقع وفي بنوك البذور.
- دليل مختصر حول كيفية إكثار أنواع النباتات المحلية.
- دليل حول أفضل الوسائل لإعادة تأهيل المسكن الطبيعية في منطقة البحر المتوسط.
- خطط إدارية لإعادة تأهيل المسكن الطبيعية في منطقة البحر المتوسط من خلال استخدام النباتات المحلية في منطقتين جربيتين في لبنان وتونس.
- ورش عمل محلية ومؤتمرات تهدف إلى نشر النتائج تشمل فئات منخسطة وبعض المتفدين.
- عمل تعاوني في منطقة البحر المتوسط للحفاظ على النباتات المحلية. استخدامها بشكل مستدام وتطويرها وتنميتها.



## WP3 : Capitalisation

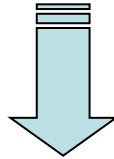
- 1 Capitalisation plan
- 5 local capitalisation plans
- 50 relevant actors contacted
- 20 agreements signed with target groups (public authorities, networks, NGOs, nurseries, etc.)

## WP4 : Conservation and Propagation of target Mediterranean plants

- **Output :**
- Elaboration of common criteria for selecting target species to be used for ecological restoration and common methodology for working on conservation and propagation of the selected Mediterranean native plants
- Elaboration of a common list with 50-75 target plant species for habitat restoration activities in the Mediterranean area (10- 15 species per partner)
- At least 100 accessions for ex situ conservation and duplication
- 100-150 experiments of different protocols for the propagation of target plants
- 50-75 new germination protocols of native Mediterranean plants will be published
- 1 manual with practical protocols for the propagation of target native plant species
- 1 seed bank for long term conservation in Tunisia

## WP4 : Conservation and Propagation of target Mediterranean plants

### Selection of native species in tunisia



- Criterion 1: work with woody species
- Criterion 2: species of selected habitats
- Criterion 3: select species of structural and functional importance for the habitat
- Criterion 4: select species for which we can collect large quantities of seeds, that are easy to work with during cleaning and testing, suitable for reproduction in nurseries
- Criterion 5: prioritize species on the basis of their importance for *ex situ* conservation
- Criterion 6: select some species of common interest among partners

Among **221 taxa**, we have selected **35 native species** with four exceptions of herbaceous species.

Scientifique Name	Family	Habitat type	Interest
<i>Alnus glutinosa</i> •(L.) Gaertn.	Betulaceae	Alnus glutinosa woods	Rare, to be protected and important for some habitats.
<i>Anthyllis barba jovis</i> L.	Fabaceae	Vegetated sea cliffs and rocky shores	rare, to be protected and important for some habitats (ex. Tabarka)
<i>Capparis spinosa</i> L.	Capparaceae	Mediterranean xeric grasslands	Important for habitat
<i>Celtis australis</i> L.	Ulmaceae	Nettle-tree ( <i>Celtis australis</i> ) woods	Rare, to be protected and important for some habitats.
<i>Ceratonia siliqua</i> L.	Fabaceae	Olive-carob forests	Important for habitat, multi-uses
<i>Crataegus azarolus</i> L.	Rosaceae	Mediterranean xeric grasslands	Important for habitat
<i>Cytisus triflorus</i> Lam.	Fabaceae	Mediterranean xeric grasslands	Important for habitat, rare
<i>Foeniculum vulgare</i> Mill.	Apiaceae	Mediterranean xeric grasslands	Important for habitat, used as medicinal plant
<i>Fraxinus angustifolia</i> Vahl.	Oleaceae	Mediterranean poplar-elm-ash forests	rare, to be protected
• <i>Genista cinerea</i> (Vill.) DC.	Fabaceae	Arborescent matorral	Important for the habitat, rare species
<i>Hedysarum coronarium</i> L.	Fabaceae	Wet heaths	exceptionnaly this herbaceous species is suggested
<i>Ilex aquifolium</i> L.	Aquifoliaceae	Arborescent matorral	rare, to be protected and important for some habitats
<i>Juniperus oxycedrus</i> L.	Cupressaceae	Arborescent matorral	important for the habitat
<i>Juniperus phoenicea</i> L.	Cupressaceae	Arborescent matorral	important for the habitat

<i>Laurus nobilis</i> L.	Lauraceae	Continental laurel ( <i>Laurus nobilis</i> )-oak woodland	very rare, to be protected
<i>Lavandula dentata</i> L.	Lamiaceae	Mediterranean xeric grasslands	Important for habitat
<i>Magydaris pastinacea</i> (Lam.) Paol. & Bég.	Apiaceae	Mediterraneo-montane grasslands	rare, endangered, to be protected, used as medicinal species
<i>Medicago arborea</i> L.	Fabaceae	Thermo-Mediterranean shrub formations	naturalized
<i>Myrtus communis</i> L.	Myrtaceae	Meso-Mediterranean silicicolous maquis	Important for the habitat
<i>Olea europaea</i> L.	Oleaceae	Thermo-Mediterranean shrub formations	Important for the habitat
<i>Periploca angustifolia</i> (Labill.) Markgr.	Asclepiadaceae	Mediterraneo-montane grasslands	Important for habitat, needs to be protected
<i>Phillyrea angustifolia</i> L.	Oleaceae	Meso-Mediterranean silicicolous maquis	Important for the habitat
<i>Pinus pinaster</i> Aiton	Pinaceae	Mediterranean pine woods	ssp. Endemic
<i>Pistacia atlantica</i> Desf.	Anacardiaceae	Mediterraneo-montane grasslands	Important for habitat, needs to be protected
<i>Pistacia lentiscus</i> L.	Anacardiaceae	Arborescent matorral	Important for the habitat
<i>Pistacia terebinthus</i> L.	Anacardiaceae	Arborescent matorral	rare, to be protected and important for some habitats
<i>Quercus coccifera</i> L.	Fagaceae	Western meso Mediterranean	Important for the habitat
<i>Retama sphaerocarpa</i> (L.) Lam.	Fabaceae	Thermo-Mediterranean shrub formations	Important for the habitat
<i>Rhus pentaphylla</i> (Jacq.) Desf.	Anacardiaceae	Mediterranean xeric grasslands	Important for habitat, needs to be protected
<i>Rosa canina</i> L.	Rosaceae	Thermo-Mediterranean shrub formations	Important for habitat, needs to be protected

Scientific Name	Family	Habitat type	Interest
<i>Ruta chalepensis</i> L.	Rutaceae	Mediterranean xeric grasslands	Important for habitat
<i>Salix pedicellata</i> Desf.	Salicaceae	Riparian willow ( <i>Salix</i> ) formations	rare, to be protected
<i>Thymus numidicus</i> Poir.	Lamiaceae	Thermo-Mediterranean shrub formations	Important for the habitat
<i>Ulmus campestris</i> (Moench) Wahlenb.	Ulmaceae	Mediterranean poplar-elm-ash forests	rare, to be protected
<i>Vitex agnus castus</i> L.	Lamiaceae	Southern riparian galleries and thickets	rare, to be protected

## STEP 1: Identification of the seed provenances

Geographical distribution of target species to be used for the restoration of the pilot area in Nefza was determined according to literature especially "Flore de la Tunisie" (Pottier-Alapetite, 1979, 1981) and with the help of colleagues in local forest service. Several field visits are done by researchers on selected sites to evaluate the harvest calendar of species as well as their availability.

Name species	Distribution	Harvest period
<i>Alnus glutinosa</i> (L.) Gaertn.	K	autumn
<i>Anthyllis barba jovis</i> L.	K, M, CB	June
<i>Capparis spinosa</i> L.	TS, NE, K, VM, CB,DT, TC	March-June
<i>Celtis australis</i> L.	K, DT	September-October
<i>Ceratonia siliqua</i> L.	Common in all Tunisia	July
<i>Crataegus azarolus</i> L.	K, M, DT, CB, TC	July
<i>Cytisus triflorus</i> Lam.	K, CB, DT	September-October
<i>Foeniculum vulgare</i> Mill.	K, NE, CB, TC, TS	October
<i>Fraxinus angustifolia</i> Vahl.	K, M, VM, DT	July-August
• <i>Genista cinerea</i> (Vill.) DC.	DT, CB, TC	October
<i>Hedysarum coronarium</i> L.	K, VM, NE, CB, DT, TC	Autumn
<i>Ilex aquifolium</i> L.	K	September-October
<i>Juniperus oxycedrus</i> L.	K	July-August
<i>Juniperus phoenicea</i> L.	K	July-August
<i>Laurus nobilis</i> L.	K	August-September
<i>Lavandula dentata</i> L.	-	August-September
• <i>Magydaris pastinacea</i> •(Lam.) Paol. & Bég.	K, VM, O, CB, DT	July
<i>Medicago arborea</i> L.	-	Autumn
<i>Myrtus communis</i> L.	K, M, DT, CB	Autumn
<i>Olea europaea</i> L.	TS	winter
• <i>Periploca angustifolia</i> (Labill.)	NE, VM, DT, CB, TC, TS	May-June

## STEP 2: Collecting Seeds of target species

➤ Implementation of the collecting of genetic material from target plant species: harvesting of high quality seeds constitutes the basis on which the next activities will be done.



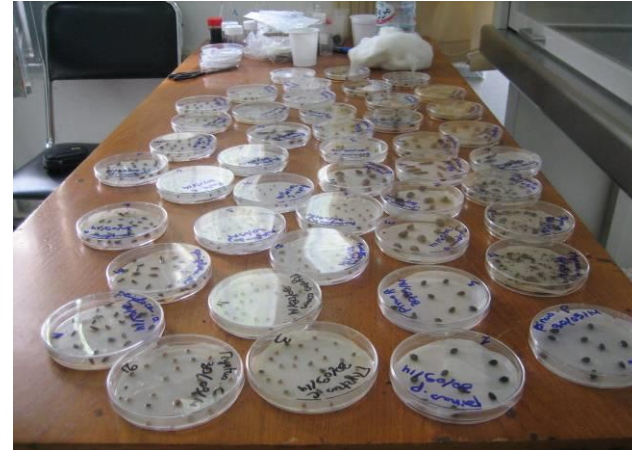


## STEP 3: Seed curation and storage

Cleaning, weighting, drying, packaging: Seed processing involves cleaning the seed samples, drying, testing their germination and packaging in appropriate containers for conservation and distribution.

*Ex situ* conservation in local seed banks, including duplicate accessions in other seed banks.

Methods prescribed by the International Seed Testing Association (ISTA) are used for determining the seed viability.

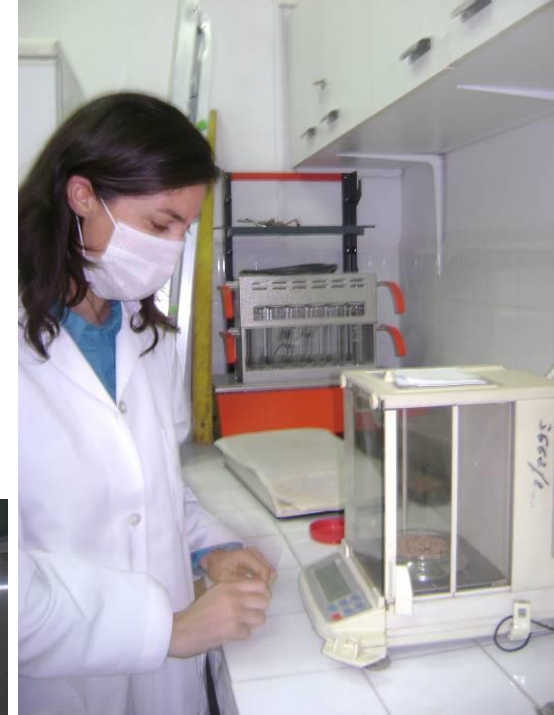


## STEP 4: Research experiments on propagation protocols

Preliminary seed testing was carried out to study germination requirements of the targeted plant species.

Later tests will be used to examine:

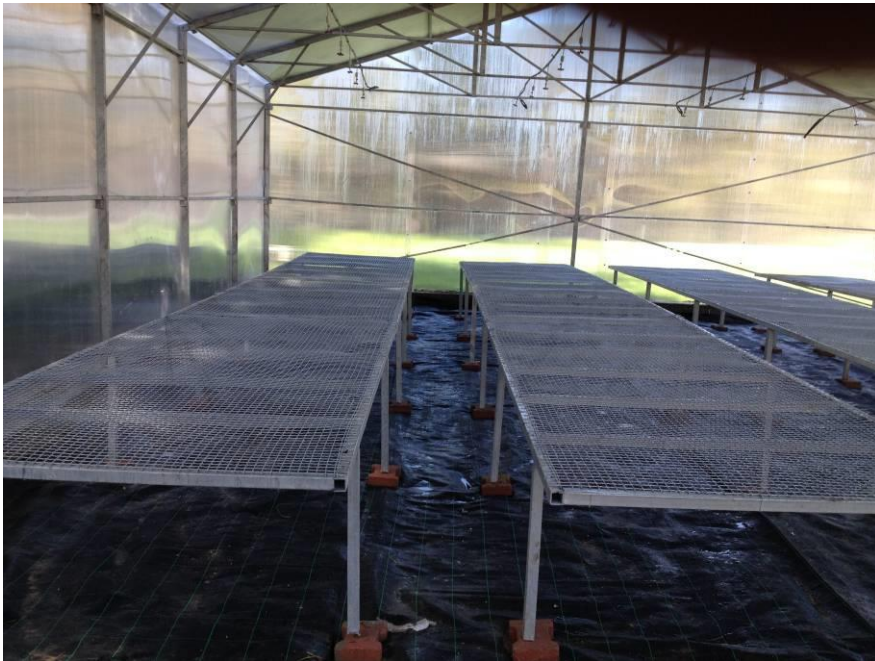
seed dormancy type,  
seed dormancy release  
treatments,  
effect of white light and  
temperature on germination.



## • Installation of a seed bank for long term conservation



## • Installation of Green house



## WP 5 : Exchange of experience on restoration of mediterranean habitats

### Objectif :

Identification of best practices on restoration of mediterranean habitas / and definition of common methodologies for techniques on habitats restoration

### Outputs

1. A review of bibliographic search
2. 30 good practices identified and analysed
3. 15 selected best practices
4. Guide of best restoration practices in mediterranean habitas

## WP 6 : ecological restoration pilot actions

### Expected results :

- Exchange of experience and know-how among partners on methodology development for similar restoration activities of Mediterranean habitats
- Improvement of the environmental management capacity and governance at local level; increased involvement of local actors
- Improvement of the technical capacity for native plant propagation in MPC partner institutions
- Increased public awareness and sensitization on the importance and feasibility of use of native plants in restoration activities

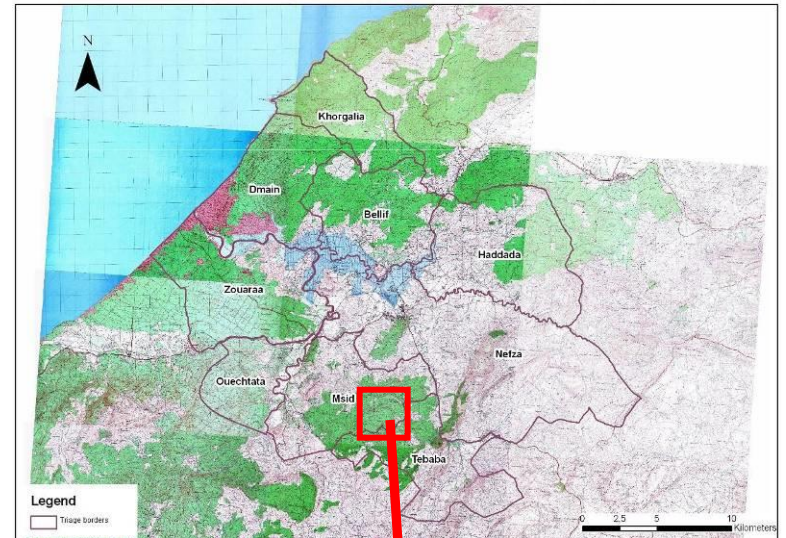
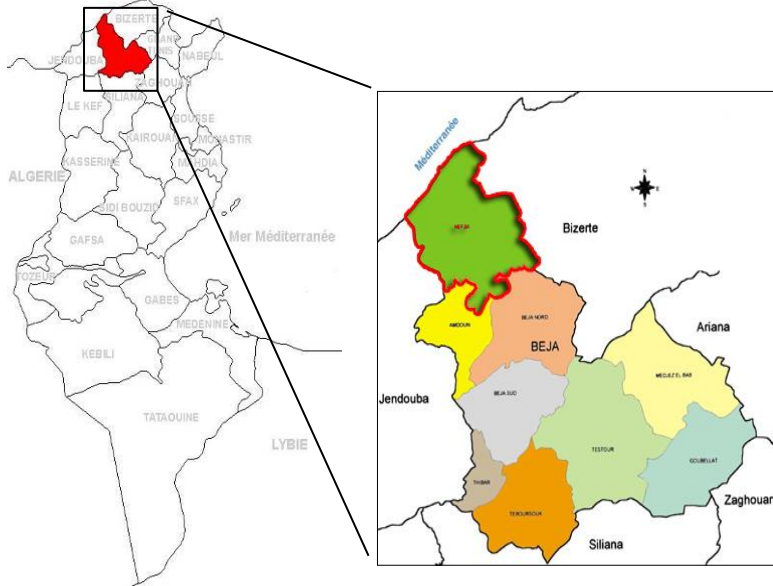
### Outputs

1. Two pilot management plan for the restoration of Mediterranean habitats
2. Two reports for the two pilot actions
3. 6 ha public land in Mount-Lebanon initiating to be restored
4. 7 ha public land in the Nefza region in Tunisia initiating to be restored

## WP 6 : ecological restoration pilot actions

### Activities realized :

#### ➤ 1. Selection of the Pilot site : Nefza / Msid



## WP 6 : ecological restoration pilot actions

### Activities realized :

#### ➤ 2. Selection of the species to be planted

Species to be planted in the pilot site are as follows: 13 species

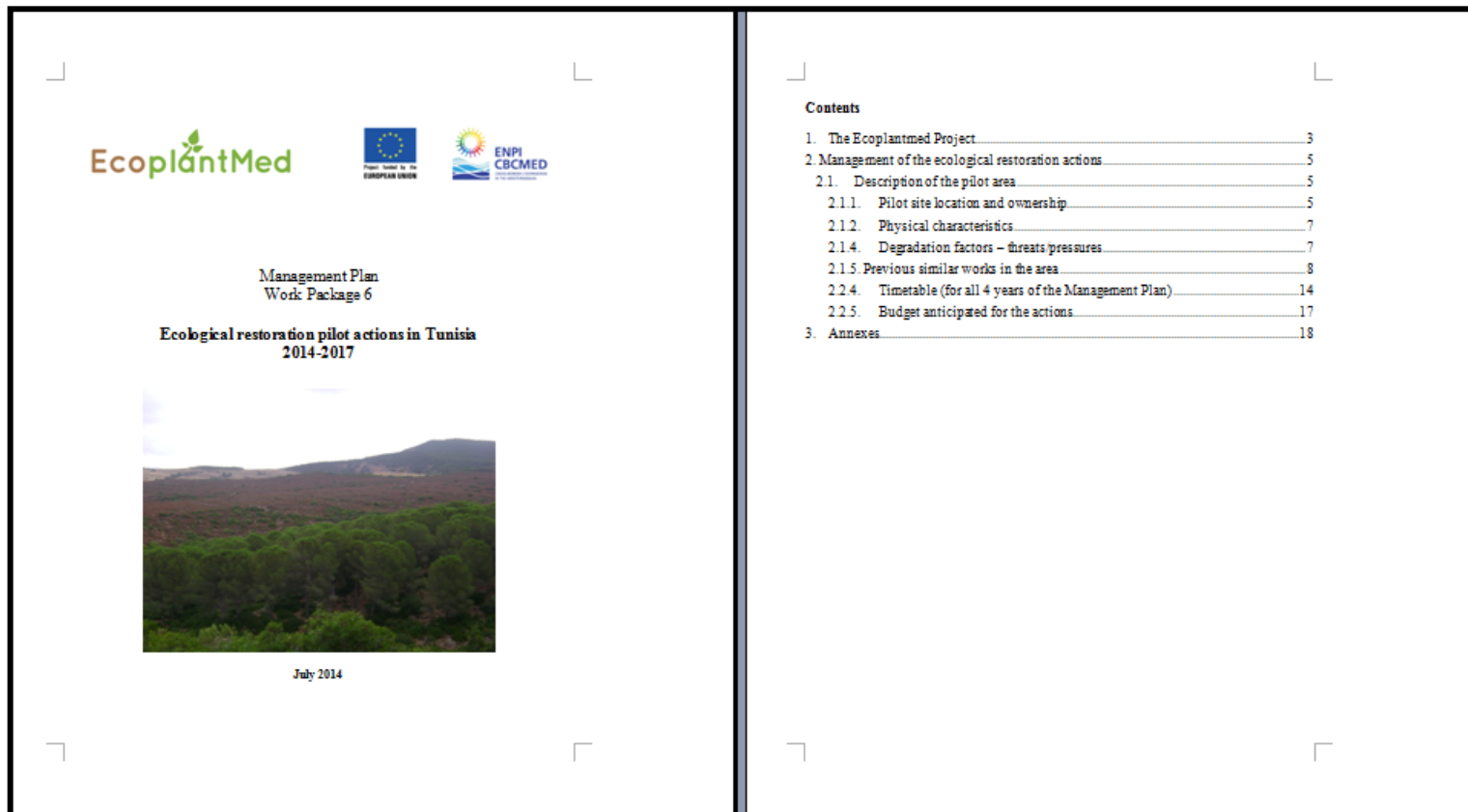
*Anthyllis barba jovis* (L.) Gaertn., *Capparis spinosa* L., *Celtis australis* L., *Ceratonia siliqua* L., *Crataegus azarolus* L., *Cytisus triflorus* Lam., *Genista cinerea* (Vill.) DC., *Laurus nobilis* L., *Medicago arborea* L., *Pinus pinaster* Aiton, *Quercus coccifera* L., *Rhus pentaphylla* (Jacq.) Desf. and *Ruta chalepensis* L.



## WP 6 : ecological restoration pilot actions

### Activities realized :

#### ➤ 3. Elaboration of a pilot management plan for the restoration of Mediterranean habitats

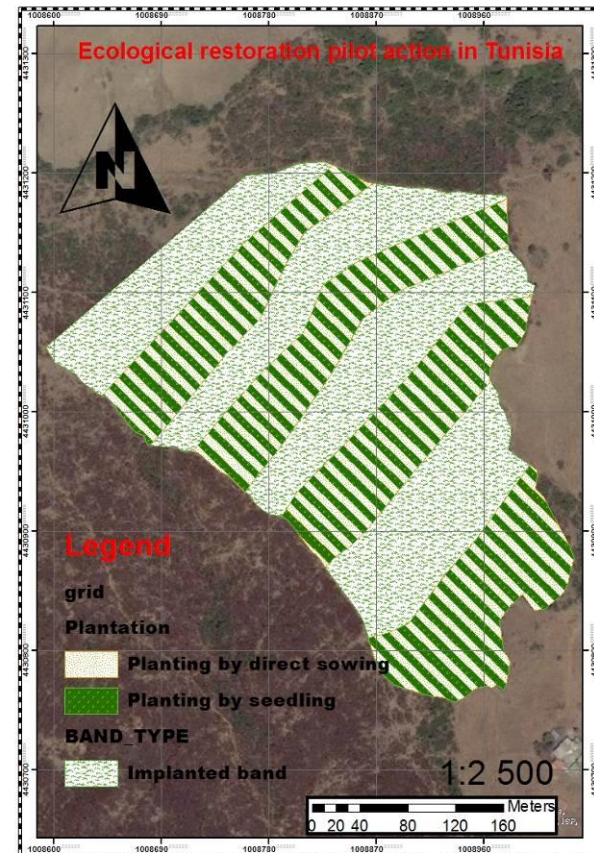
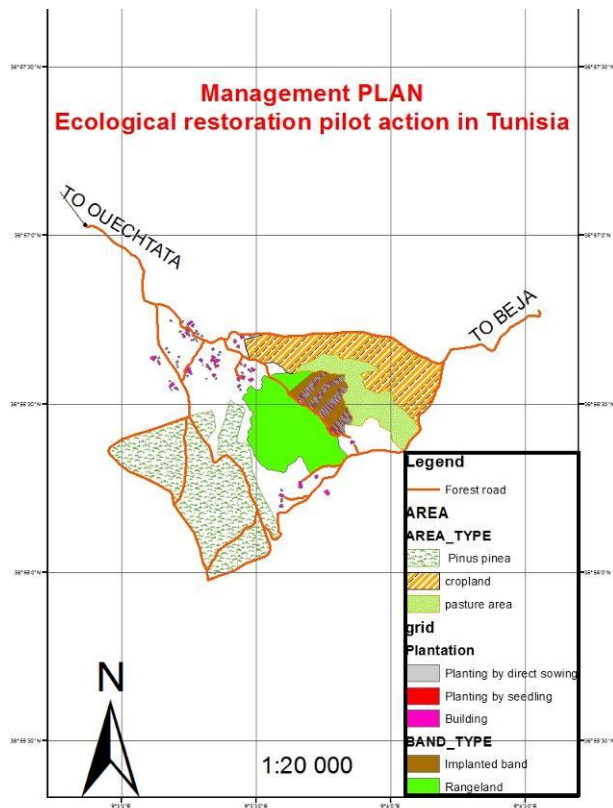




## WP 6 : ecological restoration pilot actions

### Activities realized :





- 3. Elaboration of a pilot management plan for the restoration of Mediterranean habitats



## WP 6 : ecological restoration pilot actions

### Activities realized :

- 4. Opening a tender for the realization of the planting work and the realization of the fence and selection of the private company

    <p><b>REPUBLIQUE TUNISIENNE</b> <b>MINISTRE DE L'AGRICULTURE</b> <b>INSTITUT NATIONAL DE RECHERCHES</b> <b>EN GENIE RURAL EAUX ET FORETS</b></p> <p><b>CONSULTATION / DOSSIER D'APPEL D'OFFRES NATIONAL</b></p> <p>N° 02 INRGREF/07/01/2015</p> <p><b>RELATIF AU PROJET FINANCE PAR L'UNION EUROPEENNE</b></p> <p><i>Réalisation des travaux forestiers pour l'installation d'un site pilote dans le Gouvernorat de Béja (Plantations forestières et installation de clôture)</i></p> <ol style="list-style-type: none"> <li>Référence de Publication : CONSULTATION n°2 INRGREF/07/01/2015</li> <li>Procédure : Consultation n°2 INRGREF/07/01/2015 pour la réalisation des travaux forestiers pour l'installation d'un site pilote dans le Gouvernorat de Béja (Plantations forestières et installation de clôture).</li> <li>Pouvoir adjudicateur : L'Institut National de Recherches en Génie Rural, Eau et Forêts, représenté par le Directeur Général de l'Institut National de Recherches en Génie Rural, Eau et Forêts, BP 10, 2080, Ariana-Tunis.</li> <li>Description du marché : réalisation des travaux forestiers pour l'installation d'un site pilote dans le Gouvernorat de Béja (Plantations forestières et installation de clôture) et ce dans le cadre du projet de coopération intitulé : « ECOPlantMed » et financé par l'Union Européenne (Général de l'Institut National de Recherches en Génie Rural, Eau et Forêts, BP 10, 2080, Ariana-Tunis).</li> <li>Délai de réponse : 11 mois</li> <li>Conditions de remise des offres, date limite et adresse de réception des offres :</li> </ol>	<p>Les offres doivent être reçues avant la date limite précisée dans le cahier de charge à soumissionner. Elles doivent comporter le formulaire de soumission de l'offre figurant à la partie D du présent avis de consultation et être envoyés à l'adresse suivante:</p> <p>Bureau d'ordre de l'Institut National de Recherches en Génie Rural, Eau et Forêts, BP 10, 2080, Ariana-Tunis.</p> <p>Les offres se conformeront aux conditions suivantes:</p> <ol style="list-style-type: none"> <li>Chaque offre devra être présentée en un exemplaire original unique, marqué «original» et 2 copies signifiées de la même façon que l'original et portant la mention «copie».</li> <li>Chaque offre devra parvenir à l'adresse suivante: Bureau d'ordre de l'Institut National de Recherches en Génie Rural, Eau et Forêts, BP 10, 2080, Ariana-Tunis au plus tard le 26/01/2015 à 17 h, déposée directement au bureau d'ordre de l'INRGREF ou envoyée par lettre recommandée (par voie postale).</li> <li>Chaque offre, sa mention, ainsi que toutes les pièces justificatives doivent être présentés sous enveloppe scellée comportant uniquement:             <ol style="list-style-type: none"> <li>l'adresse indiquée ci-dessus;</li> <li>le code de référence de la présente procédure de consultation (soit la «référence de publication»);</li> <li>le cas échéant, le numéro de la soumission;</li> <li>la mention «Angepas» sur le verso de l'enveloppe;</li> <li>le nom du soumissionnaire.</li> </ol> </li> </ol> <p>Les offres, techniques et financières, doivent être placées ensemble sous enveloppe scellée. Toutes les enveloppes doivent être scellées dans une autre enveloppe ou dans un paquet.</p> <p>La date limite de remise des offres est fixée au 26/01/2015 à 17 h. Le Cahier de bureau d'ordre de la Direction Générale de l'Institut National de Recherches en Génie Rural, Eau et Forêts, BP 10, 2080, Ariana-Tunis s'applique.</p> <p>Toute offre reçue après la date limite ne sera prise en considération.</p> <ol style="list-style-type: none"> <li>Période de validité des offres : Les offres seront validées pendant une durée de 90 jours à compter de la date limite de réception des offres mentionnées au point 7.</li> <li>Situation d'exclusion et règles de participation : Les soumissionnaires doivent suivre les Règles de base (chapitre 2) et les Règles annexes les «Méthodes de travail» (chapitre 3) du Guide pratique d'attribution des marchés financés par le budget général des Communautés européennes dans le cadre du schéma stratégique (PRAG v.2014). (Disponible à l'adresse Internet suivante): <a href="http://ec.europa.eu/europa/medias/data/communitaires/2014/04/24/2_Rgles_debase.pdf">http://ec.europa.eu/europa/medias/data/communitaires/2014/04/24/2_Rgles_debase.pdf</a> <a href="http://ec.europa.eu/europa/medias/data/communitaires/2014/04/24/3_Mthodes_de_travail.pdf">http://ec.europa.eu/europa/medias/data/communitaires/2014/04/24/3_Mthodes_de_travail.pdf</a></li> <li>Ouverture des plis : L'ouverture des plis se fera le : 28/01/2015 à la salle de réunion de l'Institut National de Recherches en Génie Rural, Eau et Forêts, BP 10, 2080, Ariana-Tunis.</li> </ol>	<p><b>LETTRE D'INVITATION A SOUMISSIIONNER</b> <b>INSTALLATION D'UNE PARCELLE EXPERIMENTALE PLOTE DANS LA REGION DE NEFZA (PROJET FINANCE PAR L'UNION EUROPEENNE)</b></p> <p>Chère Madame/ Cher Monsieur</p> <p><b>Objet :</b> Invitation à soumissionner « Installation d'une parcelle expérimentale pilote dans la région de Nefza »</p> <p>P.I. Cahier de charge</p> <p>Dans le cadre du Projet ECOPLANTMED, financé par l'union européenne, l'INRGREF se propose de réaliser une parcelle expérimentale pilote dans la région de NEFZA (Gouvernorat de Béja) qui consiste à réaliser une plantation d'une superficie de 7 ha par différentes espèces forestières et pastorales (Plants fournis par l'INRGREF) et l'installation d'une clôture grillagée (environ 1200 mètres) conformément au cahier de charge ci-joint</p> <p>Je vous prie de bien vouloir retourner le cahier de charge auprès de notre institut et nous fournir votre meilleure offre pour cette réalisation</p> <p>Vous êtes agréé Madame/ Monsieur l'expression de nos meilleures salutations</p> <p><b>Le Directeur Général de l'Institut National de Recherches en Génie Rural, Eau et Forêts</b> <b>Hamadi HABAIB</b></p> <p>Reçu : SOCIETE : ..... ADRESSE : ..... SIGNATURE ET CACHET : .....</p>
---	--	---

# Thank you for your attention